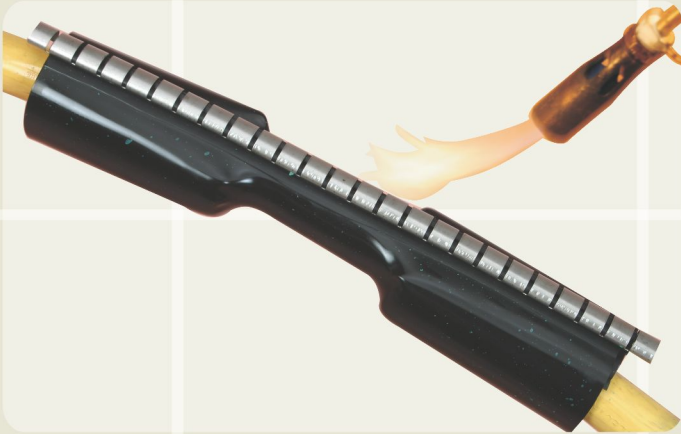


HEAT SHRINK WRAP AROUND SLEEVE



Insulsleeve is a Cross-linked polyolefin 'tube' which is folded around the cable/pipe, zipped up with a stainless steel channel and then heat shrunk.

Shut down of system not required for repair.

Hotmelt adhesive provides complete environmental sealing and insulation according to IP 68 (Ingress Protection).

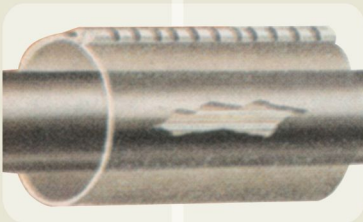
High resistance to UV rays, chemicals, corrosion, fungus, etc.

Temperature sensitive paint changes colour when heat shrinking process is complete.

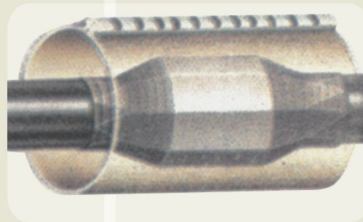
Maximum length available upto 1500 mm.

Selection Chart

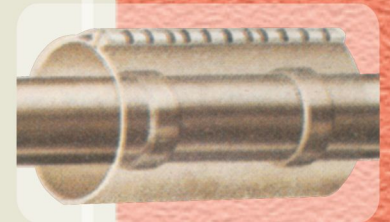
Code	Diameter (D)		Thickness (± 20%) (recovered)	Application Cable Range
	Supplied	Recovered		
GWS - 55/8	55	8	2.7	42-8
GWS - 76/18	76	18	2.7	62-22
GWS - 105/28	105	28	2.7	92-30
GWS - 140/35	140	35	2.7	122-38
GWS - 190/46	190	46	2.7	160-50
GWS - 240/50	240	50	2.7	200-55



For Cable Repairs



For the protection of Cable joint



For corrosion protection of Oil, Water & Gas pipeline

Technical Specification

PROPERTIES	VALUE	STANDARD
Physical		
Tensile Strength	17 N/mm ² (Mpa) (min.)	ASTM D638
Ultimate Elongation	300 % (min)	ASTM D638
Longitudinal Change	-10% (max.)	ASTM D2671
Water absorption	0.2 % (max.)	ASTM D570
ESCR 48 hrs. for 50°C	No Crack	ASTM D570
Torchability	No split	TE 201 AOL
Thermal		
Accelerated ageing	(120°C for 500 hrs)	ASTM D2671
Tensile Strength	15 N/mm ² (Mpa) (min.)	ASTM D638
Ultimate Elongation	220 % (min.)	ASTM D638
Temp. Indicating paint conversion 150°C for 30 min.	No Change	Visual
250°C for 5 min.	Colour Change	Visual
Electrical		
Dielectric Strength	12 KV/mm.(min)	ASTM D149
Chemical		
Chemical Resistance in 0.1 N Sol. Of Na ₂ SO ₄ , Na ₂ , NaCl ₂ , H ₂ SO ₄		
Tensile Strength	15 N/mm ² (Mpa) (min.)	ASTM D638
Elongation	200 % (min.)	ASTM D638

